

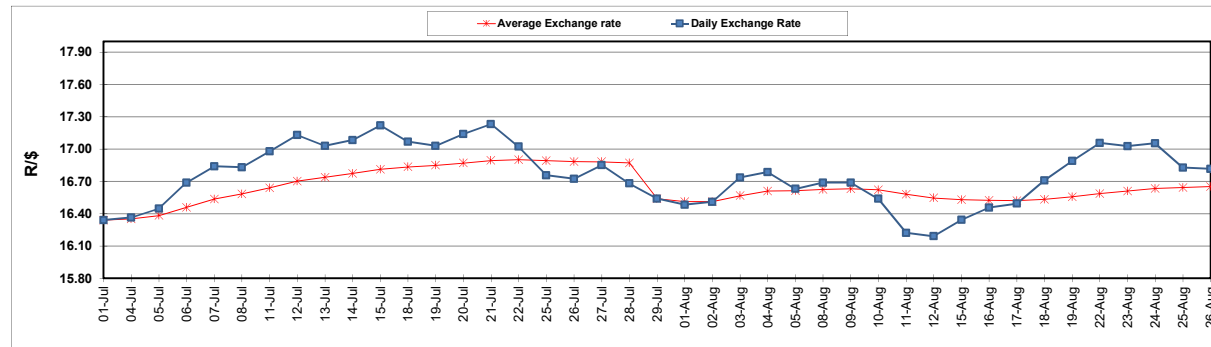
	PETROL 95 ULP	PETROL 93 ULP & LRP	DIESEL 0.05%	DIESEL 0.005%	ILL. PAR.
GAUTENG PUMP PRICE (SA c/l) AS FROM 03/08/2022	2,542.000	2,499.000	-	-	-
WHOLESALE PRICE (SA c/l) AS FROM 03/08/2022	-	-	2,452.440	2,461.840	1,842.288
SINGLE NATIONAL MAXIMUM RETAIL PRICE	-	-	-	-	2,431.000
BASIC FUEL PRICE - 26/08/2022 (SA c/l)	1,264.220	1,243.889	1,734.434	1,757.312	1,733.144
PRESS RELEASE CONTRIBUTION TO BFP 03/008/2022 - 26/08/2022 (SA c/l)	1,482.410	1,439.410	1,600.630	1,610.030	1,624.128
UNIT OVER/(UNDER) RECOVERY - 26/08/2022 (SA c/l)	218.190	195.521	(133.804)	(147.282)	(109.016)
AVERAGE BASIC FUEL PRICE 29/07/2022 - 26/08/2022	1,283.639	1,256.453	1,509.986	1,529.514	1,541.431
AVERAGE UNIT OVER/(UNDER) RECOVERY 29/07/2022 - 26/08/2022	228.342	212.529	113.930	104.230	103.269

ANALYSIS MOVEMENT OF AVERAGE OVER/(UNDER) RECOVERY

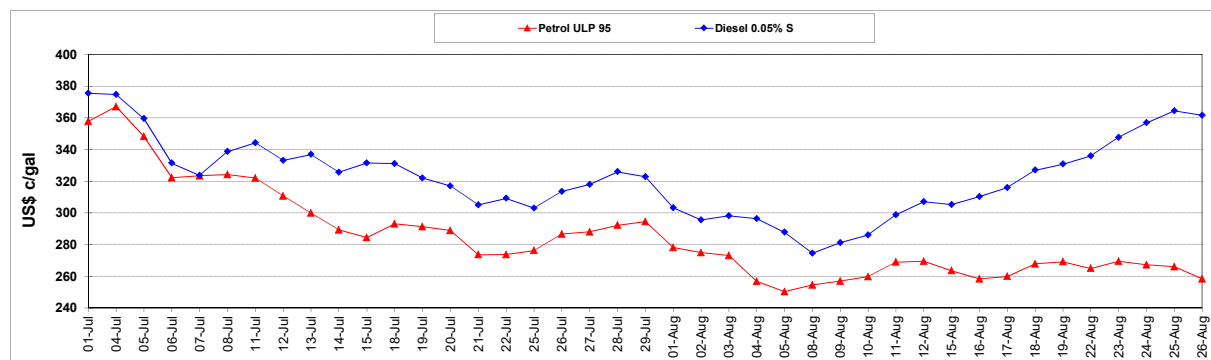
	PETROL 95	PETROL 93	DIESEL 0.05%	DIESEL 0.005%	ILL. PAR.
- MOVEMENT IN INTERNATIONAL PRODUCT PRICES	211.313	195.859	93.898	83.939	82.819
- MOVEMENT IN EXCHANGE RATE	17.029	16.669	20.032	20.291	20.449
AVERAGE UNIT OVER/(UNDER) RECOVERY 29/07/2022 - 26/08/2022	228.342	212.529	113.930	104.230	103.269

R/\$ EXCHANGE RATE - (R/\$16.8150 - 26/08/2022)

EXCHANGE RATE USED IN BASIC FUEL PRICE



INTERNATIONAL PRODUCT PRICES OF BASKET USED IN BASIC FUEL PRICE



BASIC FUEL PRICE IN SA CENTS PER LITRE

